

Global Environmental Education Partnership

Asia Pacific Center

2025 International Internship Program

Environmental Education Field Recruitment

Application Form

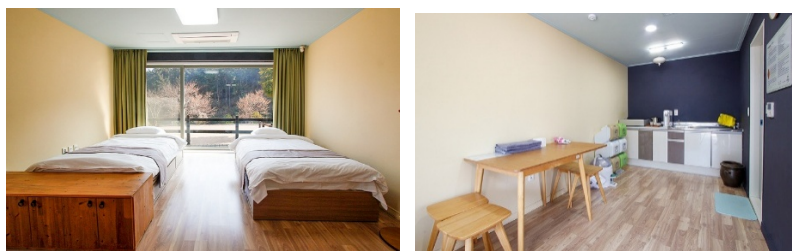
Field Name	RCE Tongyeong Sejahtera Forest (Tongyeong Education Foundation for ESD)		
Full address of the site (including country name)	RCE Tongyeong Sejahtera Forest 116, Yongnamhaean-ro, Yongnam-myeon, Tongyeong-si, Gyeongsangnam-do, Republic of Korea		
Contact Name	Unji LEE	job title	Head of Education Team
Contact phone number	+82-10-2987-1867		
Contact Email	Tyrce.ujlee@gmail.com		
Internship period available	From 3 rd September, 2025 to 16 th September , 2025		
Available internship places	1 person – 2 person - If the intern is willing to share the room (e.g., with someone of the same gender), we may be able to accommodate up to two individuals.		

<p>Field English Proficiency</p>	<p>Number of people proficient: 4 people</p> <p>Medium (able to communicate and discuss) number of people: 11 people</p> <p>Are there any English environment education courses/activity plans: Yes</p> <p>Other supplements: Currently, all environmental and education for sustainable development (ESD) programs offered at the center are conducted in Korean for a Korean audience. However, in special cases involving foreign participants, programs can be delivered in English by instructors who are proficient in the language.</p>
---	--

Does the site itself have living facilities (accommodation, transportation, food) that can be provided to interns?

☐ Yes, please explain in detail and propose a subsidy plan

1. Accommodation: We offer free on-site accommodation during the internship period. The Sejahtera Forest studio-style room is equipped with two single beds, a dining table, and a private bathroom.



2. Transportation: Free accommodation is available on-site at Sejahtera Forest, within a 2-minute walking distance from the office. However, as Sejahtera Forest is located away from the city center, interns will need to use public transportation (bus or taxi) for personal errands or grocery shopping. A one-way taxi ride to the nearest town costs approximately USD 5. Staff members commuting to and from the city may be able to provide occasional pick-up or drop-off support, depending on availability.

3. Meals: Lunch is available on request for a fee (non-vegan, approximately KRW 6,500 per meal). Sejahtera Forest staff members either subscribe to this lunch service or bring their own meals according to their preferences. Breakfast and dinner are self-catered.

4. Specialist guidance and assistance : A designated workspace equipped with a desk and computer(laptop) will be provided for the intern during the internship period. Please note that meals and other personal expenses are to be covered by the intern.

5. Others : please visit our English website for detailed information. <https://www.rce.or.kr/eng/>

Internship Plan

RCE Tongyeong Sejahtera Forest – 2025 International Internship Program

1. Service Work Content

During the internship period, international interns will be invited to observe and support ongoing environmental education programs at Sejahtera Forest, the core facility of RCE Tongyeong. These programs are part of the official curriculum delivered to elementary school students in partnership with the Gyeongsangnam-do Office of Education.

From September 1 to the end of November, the academic semester in Korea resumes, and elementary school students visit the center daily to participate in hands-on ecological education. Interns will have the opportunity to observe these structured classes and engage in reflective discussions on curriculum design, teaching methods, and environmental themes.

Additionally, on September 13, interns will be able to attend a special event organized for certified environmental educators. Sejahtera Forest is a nationally designated training center for environmental educators (a Ministry of Environment certification program), and the scheduled training session provides insights into Korea's national licensing and continuing education system for professionals in the field.

Interns will also be introduced to Sejahtera Forest's award-winning environmental education programs—eight of which are officially certified as "Excellent Environmental Education Programs" by the Korean Ministry of Environment.

2. Learning and Contribution Opportunities

Interns will:

- Gain an understanding of Korea's institutional support for environmental education, particularly at the primary school level.
- Observe actual classroom settings and interact with instructors and students.
- Learn about Korea's environmental educator certification system and its continuing education structure.
- Explore best practices in curriculum development and program certification.

In return, interns will be invited to:

- Share observations and feedback on the programs they observe.
- Draft a comparative reflection on environmental education practices between their home country and Korea.
- Assist in minor program facilitation, photography, documentation, or translation (if appropriate).

3. Expectations for the Program and Interns

We expect interns to approach the internship with curiosity, respect, and a willingness to learn across cultural contexts. Interns are encouraged to communicate openly with program staff and to maintain reflective journals throughout their experience.

We also hope that interns will serve as future ambassadors for international environmental education cooperation and continue building bridges between their home institutions and RCE Tongyeong.

4. Post-Internship Development and Publication Plans

Following the internship, interns will be asked to submit a reflection or report on their experiences. Selected contributions may be shared via the RCE Tongyeong website, newsletters, or other publications.

If the comparative report between Taiwan and Korea's environmental education programs proves meaningful, it may also be shared with the Gyeongsangnam-do Office of Education or GEEP APRC as part of our ongoing knowledge exchange efforts.

5. Supplementary Learning Opportunities in Tongyeong City

In addition to programs held at Sejahtera Forest, the internship will offer optional field trips to observe diverse models of environmental education in the city of Tongyeong. These visits aim to showcase how formal, non-formal, and informal environmental education practices are implemented in real-world community settings.

Examples include:

- **School-based environmental and sustainability clubs** at local elementary and secondary schools, where students take initiative in raising awareness and practicing sustainable living.
-
- **The “Mobile Fishing School”**, a pilot project that engages recreational fishers on nearby islands in responsible fishing practices through an experimental licensing system. This program is recognized as an innovative model of community-based environmental education.

These experiences will provide valuable insight into how local governments, schools, and civil society collaborate to promote environmental literacy and sustainability in Korea.

6. Post-Internship Outreach and Knowledge Sharing

To maximize the impact of the internship, RCE Tongyeong will support the publication of selected intern reflections and reports. These materials will be translated into Korean and submitted to local media outlets to share the perspectives and contributions of international interns with the broader community.

This initiative aims to inspire further public interest in youth-driven environmental education and to strengthen international cooperation through storytelling and knowledge exchange.

Reference Materials for RCE Tongyeong Sejahtera Forest

► Official Introduction Video

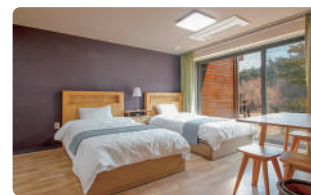
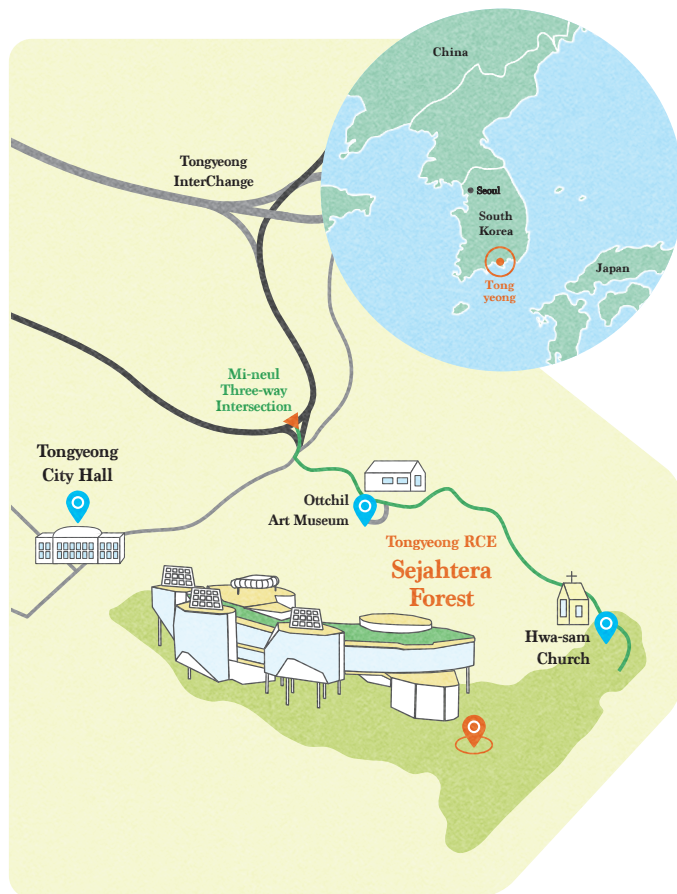
- *RCE Tongyeong Sejahtera Forest (English)*
<https://youtu.be/oS8uLVM03XU?si=ulk34WVDiCliPnEX>

► Media & International Recognition

- *UN SDGs Partnership Platform – "Change the World Through Education"*
<https://sdgs.un.org/partnerships/change-world-through-education-rce-tongyeong-formal-education-committee>
- *Korea Unique Venue (KTO)*
<https://k-mice.visitkorea.or.kr/uniquevenue/main/sub.kto?uvid=105&lang=en>
- *Earth Charter – Executive Director's Participation in RCE Tongyeong Forum*
<https://earthcharter.org/eci-executive-director-takes-part-in-the-rce-tongyeong-international-esd-forum-2024-in-south-korea/>

► Publications & Research

- *RCE Tongyeong Fellowship Program Research Paper*
https://www.rce.or.kr/images/biz/intFe_5th_researchPaper.pdf
- *Fellowship Program Overview (ENG)*
<https://www.rce.or.kr/eng/program/fellowship.php>



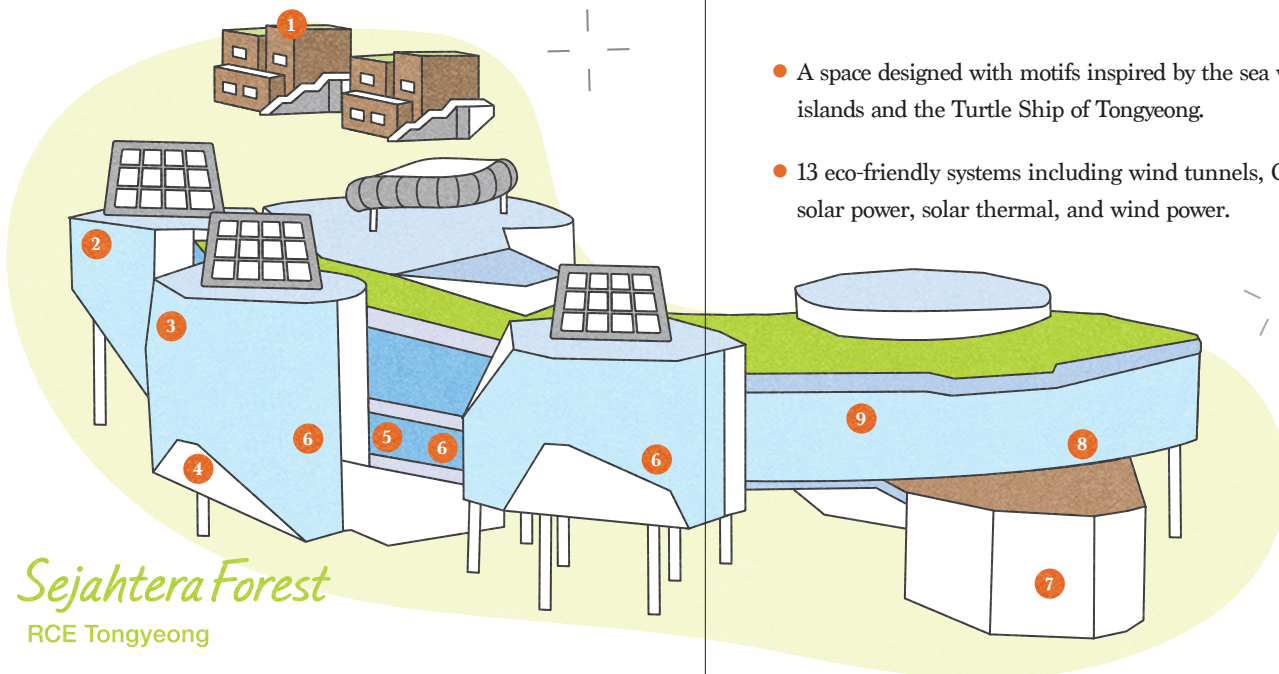
1 Guesthouse



9 Agora



8 Cafeteria



Sejahtera Forest
RCE Tongyeong

- A space designed with motifs inspired by the sea with many islands and the Turtle Ship of Tongyeong.
- 13 eco-friendly systems including wind tunnels, CO₂ boilers, solar power, solar thermal, and wind power.

RCE

Tongyeong Sejahtera Forest



ESD can help make the
world sustainable.



2 Sparkle



3 Dream



6 Play



6 Imagine



4 Transform



5 Think



6 Question



7 Act

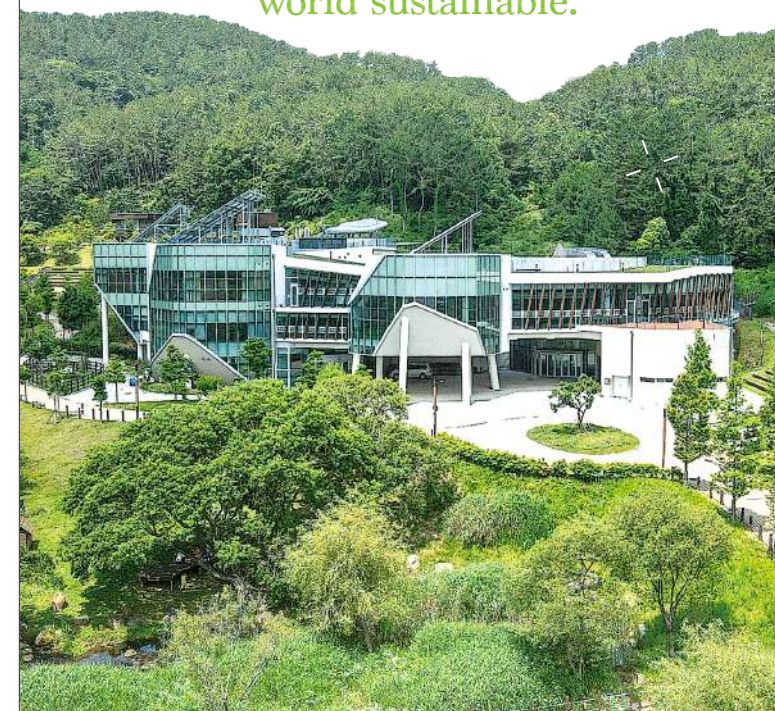


📍 (53029) 116 Yongnamhaean-ro, Yongnam-myeon,
Tongyeong, Gyeongnam Province, South Korea

☎ +82-55-650-7400

🌐 www.rce.or.kr/eng

📷 @rce_tongyeong



History of RCE Tongyoeng

- 2005** | Designated as RCE Tongyeong by UNU-IAS
- 2011** | Established the Tongyeong Education Foundation for Sustainable Development
- 2012** | Hosted the 7th Global RCE Conference
- 2015** | Opened Sejahtera Forest and was selected as a member of the UNESCO Global Action Programme (GAP) Partner Network
- 2016** | Approved as the UNESCO Global Learning City
- 2019** | Hosted the UNESCO HQ Symposium (Education for Sustainable Development and Communities: Preparation for the 'ESD for 2030' Framework)
- 2020** | Designated as an environmental education centre
- 2023** | Hosted the 15th Asia-Pacific RCE Conference Designated as Environmental Education City by Ministry of Environment



Introduction of RCE Tongyeong

The Regional Centre of Expertise on Education for Sustainable Development (RCE) is a network that spreads Education for Sustainable Development (ESD) to local communities through formal, non-formal, and informal education networks. Since 2005, we have been working with RCEs in the Asia-Pacific region to spread the message of ESD. In 2010, we launched the Tongyeong Education Foundation for Sustainable Development, and in 2015, we opened 'Sejahtera Forest,' the first ESD specialized education institution in the Asia-Pacific region. As a key partner of UNESCO's Global ESD Programme, the Sejahtera Centre works closely with local communities to foster sustainable development through ESD initiatives.

Programme of RCE Tongyeong

ESD Field Trip

ESD field tiip provides ESD programmes based in Sejahtera Forest, offer training that imparts ESD values and philosophy.

Bridge To the World

Bridge to the World, which has been operated since 2008, is an ESD programme for the youth in Tongyeong. The programme is an annual project to search for ways to find issues around the local community and solve them in a sustainable way. Through the programme, youths can focus on the problems happening in the community not in textbooks, as owners of the community. Through the RCE Network, Tongyeong youth have explored 40 cities in 25 countries broadening their global perspective and impact, as of August 2024.



Network of RCE Tongyeong

Formal Education Network

It is a network of teachers in Tongyeong established to promote ESD in classrooms. Since 2012, in collaboration with the Tongyeong Office of Education, the committee has designated one ESD teacher for each kindergarten, elementary, middle, and high school in the area. RCE Tongyeong supports training, workshops, networking and the development of educational materials.

Informal Education Network

It is a network of civic groups and public institutions in Tongyeong formed through the voluntary participation of various citizen education organizations. By developing and jointly conducting creative programmes, the committee aims to enhance mutual understanding and promote cooperation on ESD initiatives targeting citizen in Tongyeong.



Youth Network

The RCE Youth Club was spontaneously established in 2015 by a youth concerned about the sustainability of Tongyeong. Since then, it has expanded to about 20 schools in the Tongyeong region. This project-based youth network allows students to identify issues they want to address in their schools and solve them from a sustainable perspective.

Asia Pacific Network

The Sejahtera initiative is a joint initiative of RCEs in Asia-Pacific to find the alternative path towards substantiality, within the unique traditional culture of Asia Pacific region with emphasis on the coexistence. Sejahtera means substantiality in 10 aspects used in South Eastern Asia and symbolizes the philosophy and wisdom of the Asia-Pacific region that will shed light upon the path to substantiality.



International Cooperation

Tongyeong ESD International Forum

Since 2006, the Tongyeong ESD International Forum, held annually in Tongyeong, promotes the 'ESD for 2030' initiative and explores cooperation strategies among ESD institutions and various sectors. Led by the Sejahtera Centre, it aims to expand the global impact of sustainable education by sharing exemplary ESD cases worldwide.

Sejahtera Fellowship

The Sejahtera Fellowship Programme aims to strengthen the RCE global network by promoting comparative research and expert exchanges between Tongyeong and Asia-Pacific RCEs, held biennially. Participants visit Tongyeong to engage with the local community and disseminate best practices for sustainable development identified through interviews with local experts across the Asia-Pacific region.

Sejahtera Residency

The Sejahtera Residency Programme offers international researchers, artists, and writers involved in ESD, as well as in culture and the arts, the opportunity to reside in the Sejahtera Forest. Participants can advance their work while embodying the values of learning and knowledge sharing with visitors of the Sejahtera Forest.

Sejahtera Internship

The Sejahtera internship programme offers students and graduates ESD work experience. since 2015, Kitakyushu university students have worked as intern in Sejahtera Forest based on MOU between RCE Tongyeong and RCE Kitakyushu.



UNITED NATIONS
UNIVERSITY

Certificate of Acknowledgement

This is to certify that

Tongyeong RCE

was launched at

UNU Headquarters, Tokyo

A handwritten signature in black ink, appearing to read 'H. van Ginkel'.

Hans van Ginkel
UNU Rector
14 Oct 2005

제2023-7호



환경교육도시 지정서

지방자치단체명 : 경상남도 통영시

소재지 : 경상남도 통영시 통영해안로 515

지정기간 : 2024. 1. 1. ~ 2026. 12. 31.

「환경교육의 활성화 및 지원에 관한 법률」 제27조
제1항 및 같은 법 시행규칙 제13조제3항에 따라
위 지방자치단체를 환경교육도시로 지정합니다.

2023년 10월 26일

환경부장관





제 2024-1호

환경교육사 양성기관 지정서

1. 기 관 명 : 통영시지속가능발전교육재단
2. 대 표 자 : 천영기
3. 소 재 지 : 경상남도 통영시 용남면 용남해안로 116
4. 양성등급 : 3급
5. 지정기간 : 2025.1.1. ~ 2027.12.31.

「환경교육의 활성화 및 지원에 관한 법률」 제19조,
같은 법 시행령 제16조제4항 및 같은 법 시행규칙
제7조2항에 따라 위 기관을 환경교육사 양성기관
으로 지정합니다.

2025년 1월 1일



환경부장관

