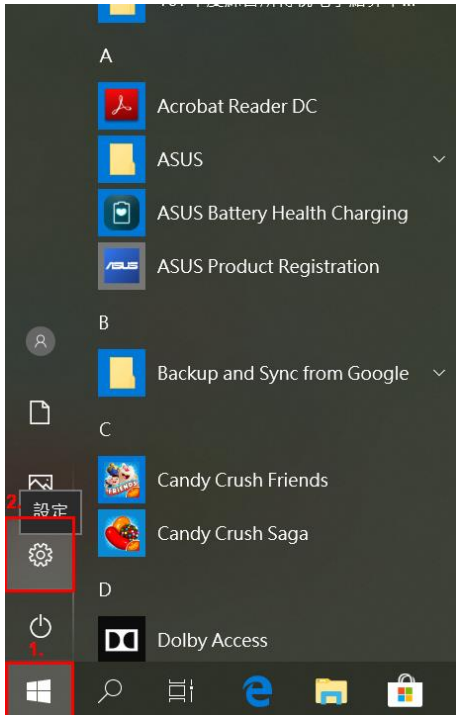


# Student Dormitory Network Instructions

## Internet process

### Step1 : Setting IP Address on Computer

Click the "Start" button -> "Settings"



Select the "network and internet".


設定

— □ ×

## Windows 設定

尋找設定


 系統  
顯示器、音效、通知、電源


 裝置  
藍牙、印表機、滑鼠


 電話  
連結您的 Android、iPhone

 網路和網際網路  
Wi-Fi、飛航模式、VPN

 個人化  
背景、鎖定畫面、色彩

 應用程式  
解除安裝、預設值、選用功能

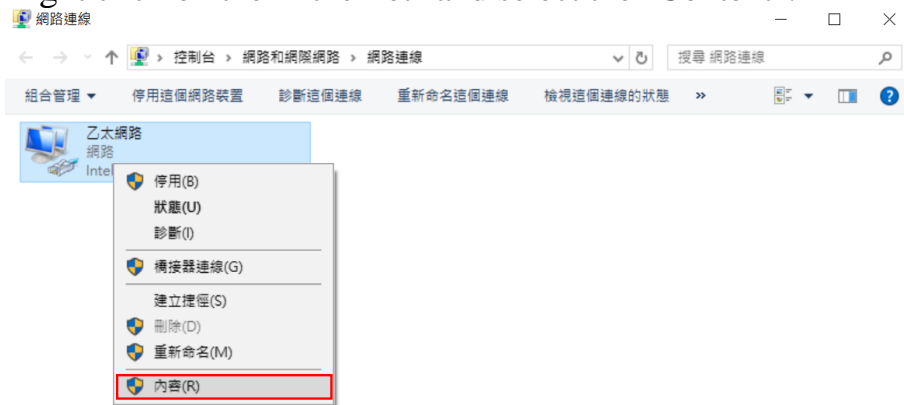
 帳戶  
您的帳戶、電子郵件、同步設定、工作、家庭

 時間與語言  
語音、地區、日期

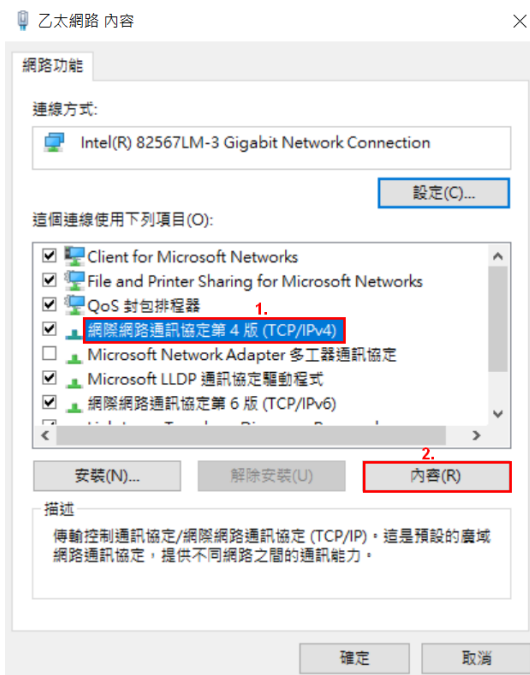
Click on the "Ethernet" and select the "Change Interface Card Options".



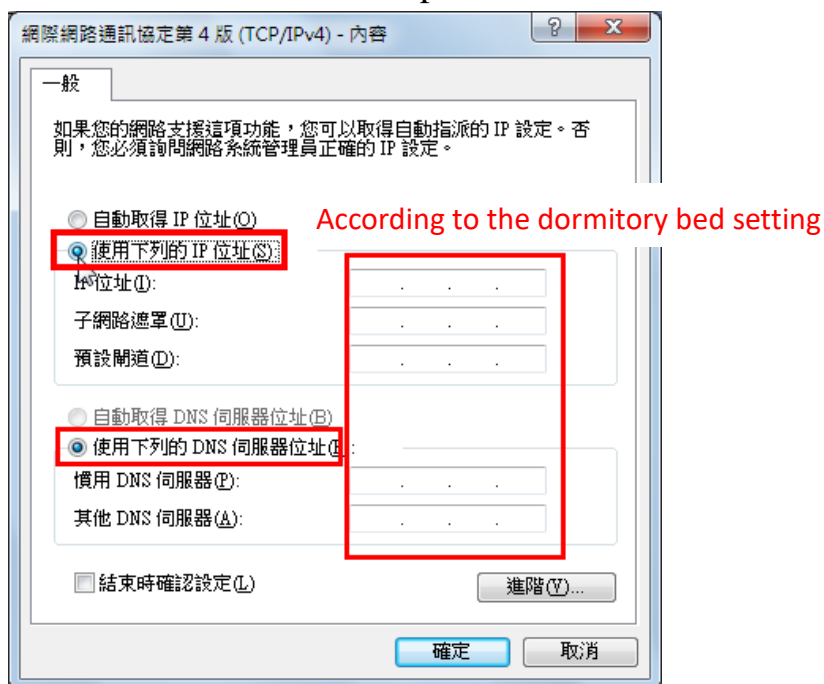
Right click on the "Ethernet" and select the "Content".



Select the "Internet Protocol Version 4 (TCP/IPv4)" and click the "Content".

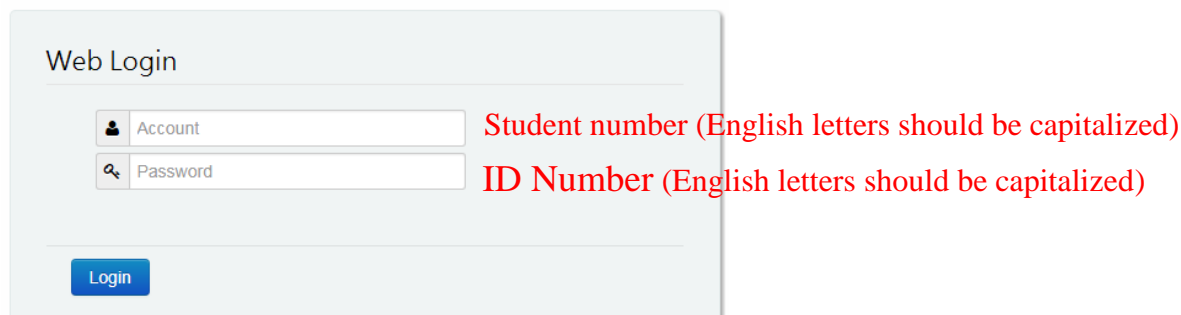


Click the "Use the following IP address", then set the relevant settings according to the IP address assigned to the bed, and then click the "Use the following DNS server address" to set the DNS server address as specified.

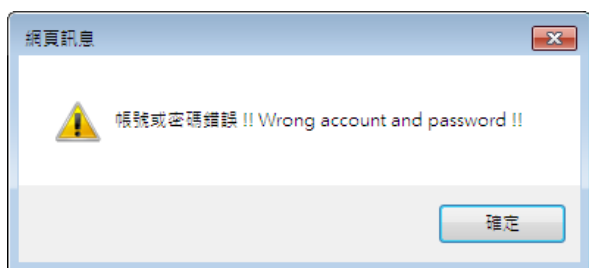


## Step2 : Login page

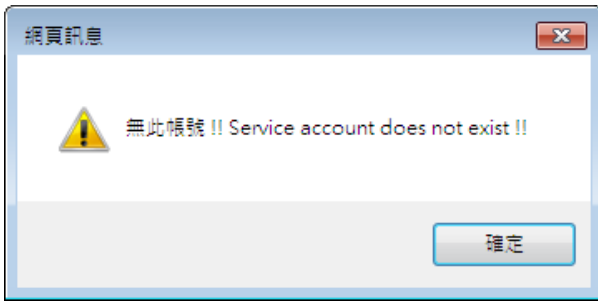
You need to enter your account number and password to access the dormitory. When you open the browser, a login screen will appear. Please enter your account number and password. The account number is "Student ID", the password is "ID Number", the foreign student ID is "Student ID", the password is "Residential ID Number", and then press the Login button to login. **Note: The login screen will not be visible in the browser blank page. The half-type full-size and English capitalization are considered different.**



If the account number and password are entered incorrectly, an error message will appear (as shown below).



If the account and password are not entered incorrectly, the following message appears, indicating that there is no such account, please inform the system administrator.



### Step3 : Confirmation of registration information

After logging in the screen, please fill in the registration information for the first time online. The system will bring out your computer IP and network card number (MAC Address), please fill in the name, phone number (mobile number), bed number, confirm and press Apply to send out.

申請註冊上網 Internet registration	
<input type="text"/>	Bed allocation IP (system automatically brought out)
<input type="text"/>	Computer network card number (automatically brought out by the system)
<input type="text" value="Your name"/>	Name
<input type="text" value="09xx-xxxxxx"/>	Cell phone number(ex : <b>09xx-xxxxxx</b> )
<input type="text" value="Room number"/>	Room number-bed number(ex : <b>xxx-x or xxxx-x</b> )
<input type="button" value="Apply"/> <input type="button" value="Return"/>	

After pressing Apply, the following screen will appear.

申請註冊上網 Internet registration

申請登入完成! 請重新登入

Please login again to complete your application.

### Step4 : Re-login page

The login page will appear after the page has been reorganized or reopened.

Web Login

<input type="text" value="Account"/>
<input type="text" value="Password"/>
<input type="button" value="Login"/>

Enter the account number and password, then press Login. After successfully logging in to the screen,

it will be redirected to the home page after five seconds.

## 驗證成功！Authentucation Succeeded！

3秒後將導向之前您所瀏覽的網址，如果沒有反應請點 [直接導向](#)

System will direct to previous viewed website in five second.

### IP does not match MAC

When the computer or bed is replaced, the IP and MAC will not match. Please enter the reason, name, mobile number, bed number (name, mobile number, bed number is a required field), and then press Apply.

申請註冊上網 Internet registration

MAC不符，目前無法上網。若更換電腦或更換床位請提出申請，管理者收到申請審核後再恢復網路。  
Your network cannot be used because your computer's IP and mac address does not match.  
If you replace the computer or replace the dormitory bed, please submit your replacement need to the network administrator.  
When the network administrator audits your submit, your network will be used.

Fill in and press Apply to send it out. The network will be automatically activated after the system is audited.

申請註冊上網 Internet registration

申請登入完成！請重新登入

Please login again to complete your application.

Refreshing the page or reopening the page will bring up the login page. Enter your account number and password, then press Login.

Web Login

After successfully logging in to the screen, it will be redirected to the homepage after five seconds.

## 驗證成功！Authentucation Succeeded！

3秒後將導向之前您所瀏覽的網址，如果沒有反應請點 [直接導向](#)

System will direct to previous viewed website in five second.